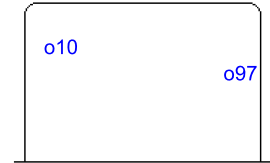


SHOT CHART  
LTU - ROU

Shots by LTU  
Goals (o): 2    SSG (+): 11  
SSP (<): 4    SPG (-): 4



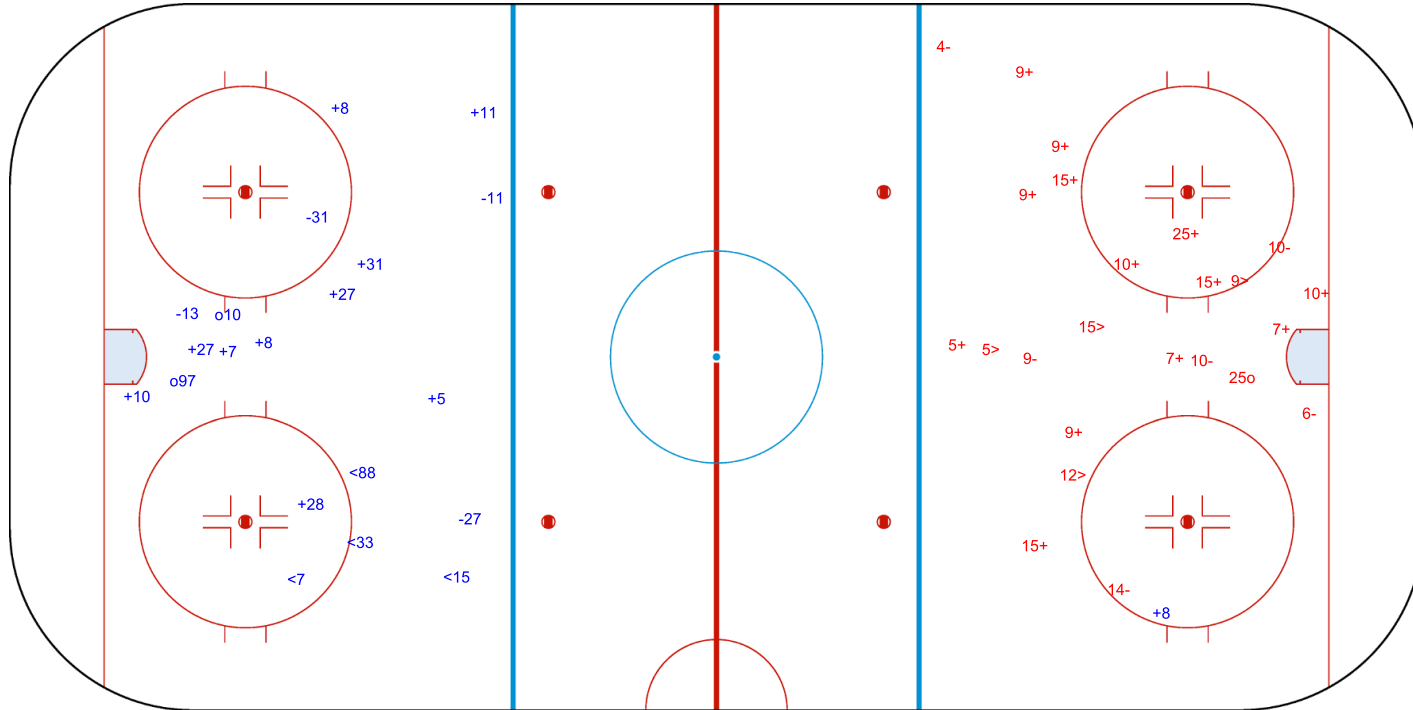
GK 1 of ROU

ROU → 1st Period ← LTU

Shots by ROU  
Goals (o): 1    SSG (+): 13  
SSP (>): 4    SPG (-): 6



GK 50 of LTU



Shots by ROU

Goals (o): 2    SSG (+): 9  
 SSP (-): 6    SPG (-): 5



GK 50 of LTU



**2nd Period**

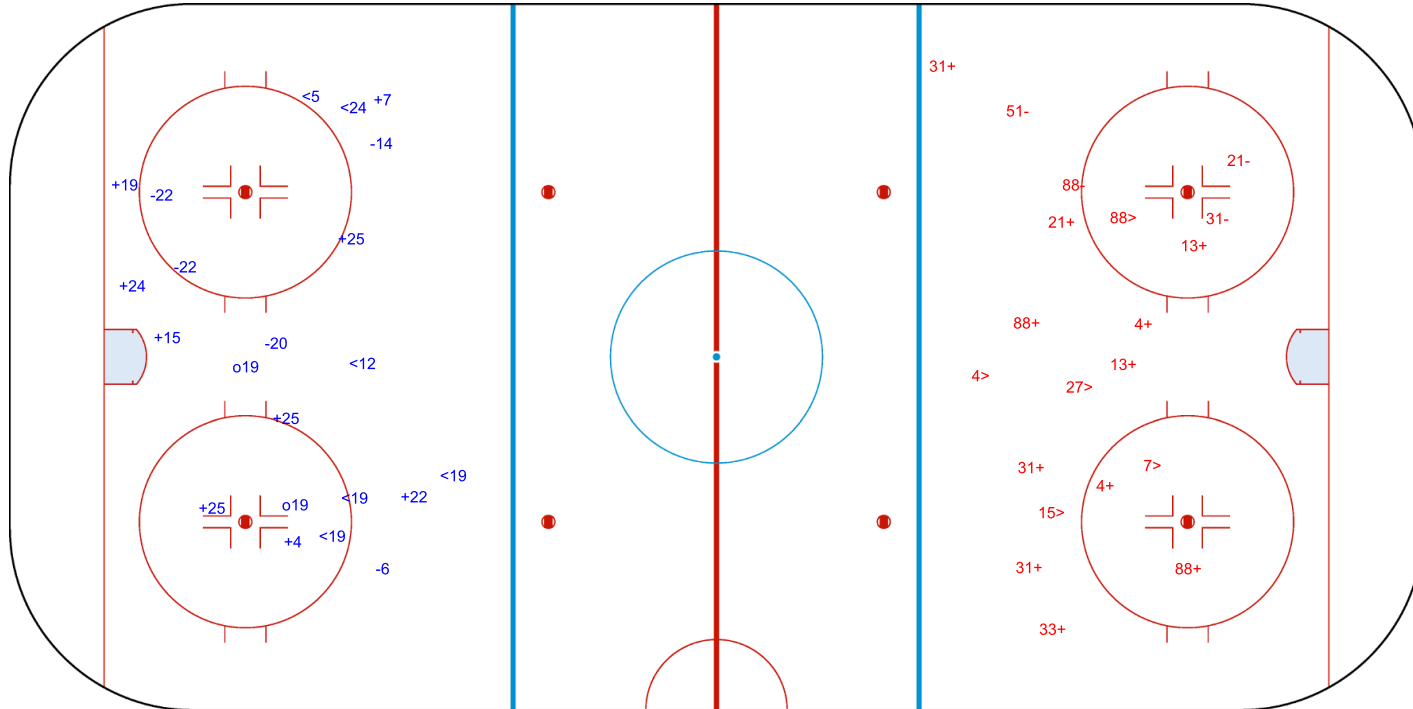


Shots by LTU

Goals (o): 0    SSG (+): 11  
 SSP (>): 5    SPG (-): 4



GK 1 of ROU



Shots by LTU  
Goals (o): 0    SSG (+): 10  
SSP (-): 6    SPG (-): 12



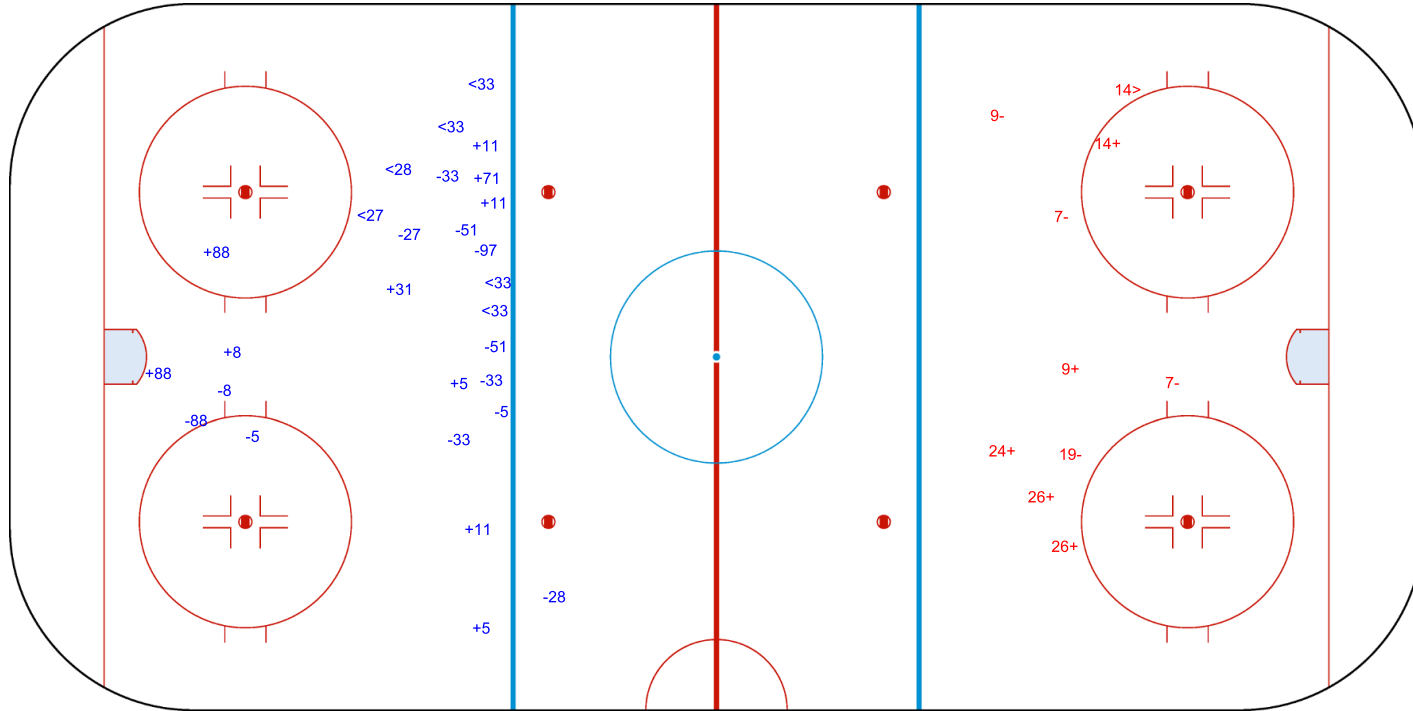
GK 1 of ROU

ROU → 3rd Period ← LTU

Shots by ROU  
Goals (o): 0    SSG (+): 5  
SSP (>): 1    SPG (-): 4



GK 50 of LTU



**Legend:**  
**GK**    Goalkeeper                      **SPG**    Shots past goal                      **SSG**    Shots saved by goalkeeper                      **SSP**    Shots saved by player